

www.eclipse-td.net

- Specifications and images in this catalogue may be subject to revision without prior notice.
- Product colours may differ from those published.
- The feeling of being present at the original recording can only be achieved so long as the music software reflects the recorded conditions; including microphone settings, mixing, editing and mastering.

FOR FURTHER INFORMATION (UK & EU)

ECLIPSE TD (UK) LTD
LOE House, 159 Broadhurst Gardens, London NW6 3AU, UK
Tel: +44 (0)20 7328 4499 Fax: +44 (0)20 7624 6384
E-mail: info@eclipse-td.co.uk

©2010 all rights reserved



ECLIPSE TD SERIES

TIME DOMAIN AUDIO SYSTEM





SOUND REVOLUTION

Just for the Pure Performance

Once, listening to music was all about performance. In fact, the first home audio systems made nearly a century ago, were aimed at recreating the live performance experience. But over time this changed. Audio equipment came to focus more on the technicalities of reproducing a wide range of frequencies accurately, rather than recreating the sound and the spirit of the actual performance itself.

ECLIPSE TD, however, recreates pure performance to reveal the very essence of the artists' passion and craft. We believe that music should be reproduced just as it was created, with nothing added or reduced.

Enjoy Music, Not HiFi

The Concept of Time Domain

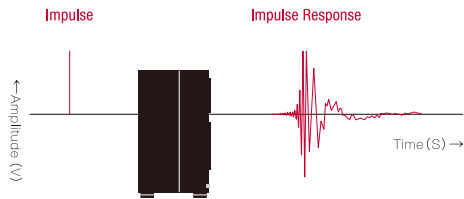
Every element in a HiFi system should reproduce sound faithfully. Not every manufacturer interprets this with the same commitment, but every single component of the ECLIPSE TD series is true to purpose.

Conventional speakers try to create accurate frequency characteristics, in other words accurate notes. They aim to reproduce a flat response from low to high frequencies without distortion.

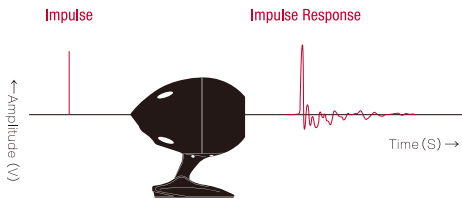
The ECLIPSE TD series, on the other hand, is designed around the Time Domain theory, which seeks to accurately reproduce the exact timing of the air and sound movement - as it occurred in the original recording. The difference is you feel the sense of 'being there', at the original sound event. We could only achieve this using our own unique technology.

Impulse Response Comparison

Conventional Speaker



ECLIPSE TD series



The closer the similarity between the input signal waveform (Impulse) and the output signal waveform (Impulse Response), the more accurate the sound reproduction.

Time Domain theory is an audio theory proposed by Hiroyuki Yoshii, President of TimeDomain Corporation.

Experience Pure Sound

ECLIPSE TD lifts a veil between you and the music you most enjoy. Without the distortion caused by conventional speakers you can discover new subtleties and details you never heard before.

Conventional Speaker



ECLIPSE TD series



You can only recreate the sound precisely by reproducing each element of sound faithfully.

Beautiful Sound from a Natural Form

Pure Design for Sound

ECLIPSE TD speakers' unique and beautiful design provides the ideal platform for the core elements of accurate sound reproduction: clarity, spatial reproduction and timing.

The rigid, yet tactile egg-shape means that no two surfaces are in the same plane, so internal standing and diffraction waves normally formed at the front baffle edges are largely eliminated.

A conical anchor weight is attached to the back of the drive-unit magnet to act as a mass sink, which 'grounds' the drive-unit. This ensures that the only air movement is that generated by the cone tracking the original performance.

In all ECLIPSE TD speakers, a sophisticated diffusion stay holds the driver securely. Then the drive unit is mounted in a floating mechanism so no residual vibrations are transferred from the unit itself to the enclosure.



Clarity of Sound

Reproducing ALL the Recorded Sound

Speakers are often described as 'soft' or 'warm' to convey their character. Actually, these phrases refer to extra colourations they add themselves. They aren't on the original recording. Once these are removed, more of the real essence of the recording is revealed.

With ECLIPSE TD you can actually experience what it is that makes a Stradivarius an exceptional violin. You can feel the nuances of a guitarist's fingers, manipulating the strings. Without any distortion there is more of the true sound to experience and enjoy.





See More in Sound

Listen to Sound, Not Speakers

Real sound happens in the space around you. ECLIPSE TD speakers produce sound stereoscopically from the air, so you hear sound, just as you would in the best concert seat or right inside a scene of a film.

We believe in original sound.



Perfect Performance

Feel the Artists' Skill

Rhythm depends upon recreating the clear beginning and ending of a sound. Our technology preserves this because the driver is able to react instantaneously to move the air when needed and then stop immediately. This not only accurately reproduces sound, but also the exact timing of every note.

World-class musicians recognise the ability of ECLIPSE TD speakers to reproduce live sound better than conventional speakers.

Significant Recognition from Serious Professionals



 **Klaus Hiemann** Balance Engineer

"They combine the accuracy which up to now seemed to be only possible with professional headphones and all the conveniences of loudspeaker listening."

Former Director of Deutsche Grammophon Recording Centre and Founder of the Emil Berliner House



 **Michael Nyman** Composer/Pianist

"They are, quite simply, an acoustic extension of my piano. It gives me the benefit of absolutely faithful sound reproduction."

Renowned composer of contemporary music and award-winning film scores



 **Simon Osborne** Mixer/Engineer/Producer

"These speakers sound as fantastic as they look. The stereo image is one of the best I have heard."

Grammy Award winner for 'Best Pop Album 1999' for Sting's 'Brand New Day'



 **Randy Brecker** Trumpeter



"These speakers are not "one of the best" near field monitors I've ever listened to, but probably "the best."

Grammy Award winner for 'Best Contemporary Jazz Album 1994, 1997 & 2003'

PHOTO BY Shu Tomioka

Global Acclaim



 United Kingdom	HiFi+	TD725sw	Product of the Year 2007, Subwoofer Category
	HiFi News	TD725sw	Outstanding Product, January 2009
	HiFi Choice	TD725sw	Gold Award 2006, Best Subwoofer over £1000 Category
		TD510	Editor's Choice, Award 2006
		TD510	Editor's Choice, March 2006
	What HiFi	TD712zMK2	5 Star, Speaker £1500 and above Category, September 2009
		TD725sw	5 Star, Subwoofer Category, October 2006
		TD510	5 Star, Speaker £500-£1500/pair Category, March 2006
		TD307PAII	5 Star, Dock Systems £100-£500/set Category, August 2007
	Home Cinema Choice	TD725sw TD510	Reference Status, March 2007 (for front TD712z, rear TD610 + TD725sw 5.1ch System) Reference Status, March 2007 (for front TD712z, rear TD610 + TD725sw 5.1ch System)
 Japan	T3	TD508II	5 Star & Test Winner, August 2007
	MacUser	TD307PAII	5 Mice, 26 October 2007
	MacFormat	TD307PAII	5 Star, September 2007
	MacWorld	TD307PAII	4 Star, November 2007

TD712zMK2

HVi: Grand Prix, Speaker Category, Grand Prix 2009
HVi: 2nd Prize, Speaker Y400K-Y700K Category, Summer Best Buy 2009
HVi: 2nd Prize, Speaker Y400K-Y700K Category, Winter Best Buy 2009
On-gen Publishing: Gold Prize, Speaker Y500K-Y1M Category, Pure Audio Grand Prix Summer 2009
On-gen Publishing: Gold Prize, Speaker Y500K-Y1M Category, Pure Audio Grand Prix 2010
On-gen Publishing: Bronze Prize, Audio Excellence Award 2010
MJ Musen & Jikken: Technology of the Year, Speaker Category, 28th MJ Annual Award

TD510

HVi: 2nd Prize, Speaker Y100K-Y300K Category, Winter Best Buy 2005
HVi: 3rd Prize, Speaker Y100K-Y300K Category, Summer Best Buy 2007
On-gen Publishing: Grand Prix, Home Theatre Category, Visual Grand Prix 2006
On-gen Publishing: Award, Speaker Category, Visual Grand Prix 2006
On-gen Publishing: Award, Speaker Category, Visual Grand Prix 2007
On-gen Publishing: Award, Speaker Category, Visual Grand Prix Summer 2007
On-gen Publishing: Award, Speaker Category, Visual Grand Prix 2009
On-gen Publishing: Award, Speaker Category, Pure Audio Grand Prix Summer 2009
On-gen Publishing: Award, Speaker Category, Pure Audio Grand Prix 2010
On-gen Publishing: Bronze Prize, Audio Excellence Award 2006
On-gen Publishing: Award, Small Speaker Category, Audio Excellence Award 2006
Japan Industry Design Promotion Organisation: Good Design Award, 2006

TD508II

On-gen Publishing: Award, Speaker Category, Visual Grand Prix 2006
On-gen Publishing: Award, Speaker Category, Visual Grand Prix 2007
On-gen Publishing: Award, Speaker Category, Visual Grand Prix Summer 2007
On-gen Publishing: Award, Speaker Category, Visual Grand Prix Summer 2009
On-gen Publishing: Award, Speaker Category, Pure Audio Grand Prix 2010
On-gen Publishing: Award, Small Speaker Category, Audio Excellence Award 2006
Japan Industry Design Promotion Organisation: Good Design Award, 2006

TD307II

Home Theatre: Award, Speaker Category, Home Theatre Grand Prix 2009
On-gen Publishing: Award, Speaker Category, Visual Grand Prix Summer 2007
On-gen Publishing: Award, Speaker Category, Visual Grand Prix 2008
On-gen Publishing: Award, Speaker Category, Pure Audio Grand Prix 2010

TD307THII

HVi: 3rd Prize, Multi-Channel Speaker Category, Summer Best Buy 2007
HVi: 2nd Prize, Multi-Channel Speaker Category, Winter Best Buy 2007
HVi: 3rd Prize, Multi-Channel Speaker Category, Summer Best Buy 2008
On-gen Publishing: Bronze Prize, Visual Grand Prix Summer 2007
On-gen Publishing: Grand Prix, Home Theatre Category, Visual Grand Prix Summer 2007
On-gen Publishing: Award, 5.1ch Speaker System Category, Visual Grand Prix Summer 2007
On-gen Publishing: Bronze Prize, Visual Grand Prix 2008
On-gen Publishing: Award, Home Theatre Category, Visual Grand Prix 2008
On-gen Publishing: Award, 5.1ch Speaker System Category, Visual Grand Prix 2010
On-gen Publishing: Gold Prize, Package Speaker Category, Home Theatre Grand Prix Summer 2010

TD307PAII

On-gen Publishing: Award, Home Theatre System Category, Visual Grand Prix Summer 2007
On-gen Publishing: Top Prize, Home Theatre System Category, Visual Grand Prix Summer 2008
MJ Musen & Jikken: Technology of the Year, Speaker Category, 26th MJ Annual Award
Japan Industry Design Promotion Organisation: Good Design Award, 2007

TD725sw

Stereo Sound: 1st Prize, Subwoofer Category, The Best Buy Components 2006-07
Stereo Sound: 2nd Prize, Subwoofer Category, The Best Buy Components 2007-08
Stereo Sound: 1st Prize, Subwoofer Category, The Best Buy Components 2008-09
HVi: Grand Prix, Peripheral Category, Grand Prix 2006
HVi: 1st Prize, Subwoofer Category, Summer Best Buy 2006
HVi: 1st Prize, Subwoofer Category, Winter Best Buy 2006
HVi: 1st Prize, Subwoofer Category, Summer Best Buy 2007
HVi: 1st Prize, Subwoofer Category, Winter Best Buy 2007
HVi: 1st Prize, Subwoofer Category, Summer Best Buy 2008
HVi: 1st Prize, Subwoofer Category, Winter Best Buy 2008
HVi: 1st Prize, Subwoofer Category, Summer Best Buy 2009
HVi: 1st Prize, Subwoofer Category, Winter Best Buy 2009
On-gen Publishing: Silver Prize, Visual Grand Prix Summer 2006
On-gen Publishing: Grand Prix, Home Theatre Category, Visual Grand Prix Summer 2006
On-gen Publishing: Grand Prix, Critics' Choice Category, Visual Grand Prix Summer 2006
On-gen Publishing: Award, Subwoofer Category, Visual Grand Prix Summer 2006
On-gen Publishing: Grand Prix, Home Theatre Category, Visual Grand Prix 2007
On-gen Publishing: Grand Prix, Product R&D Category, Visual Grand Prix 2007
On-gen Publishing: Award, Subwoofer Category, Visual Grand Prix 2007
On-gen Publishing: Grand Prix, Golden Long-run Award, Visual Grand Prix Summer 2007
On-gen Publishing: Award, Subwoofer Category, Visual Grand Prix Summer 2007
On-gen Publishing: Gold Prize, Subwoofer Y200K and above Category, Visual Grand Prix Summer 2009
On-gen Publishing: Gold Prize, Subwoofer Y200K-Y500K Category, Visual Grand Prix 2010
On-gen Publishing: Gold Prize, Speaker & Subwoofer Category, Home Theatre Grand Prix 2010
On-gen Publishing: Bronze Prize, Audio Excellence Award 2007
On-gen Publishing: Top Prize, Product General Category, Audio Excellence Award 2007
Swing Journal: Grand Prix, Non-Category, Jazz Component Award 2006
MJ Musen & Jikken: Technology of the Year, Speaker Category, 25th MJ Annual Award

316SW

On-gen Publishing: Award, Subwoofer Category, Visual Grand Prix 2004
On-gen Publishing: Award, Subwoofer Category, Visual Grand Prix 2005
On-gen Publishing: Award, Subwoofer Category, Visual Grand Prix Summer 2007
On-gen Publishing: Award, Subwoofer Category, Visual Grand Prix 2008
On-gen Publishing: Award, Subwoofer Y100K or less Category, Visual Grand Prix 2010
On-gen Publishing: Award, Product General Category, Audio Excellence Award 2004

TDA501II

On-gen Publishing: Award, Audio Amplifier Category, Visual Grand Prix Summer 2007
On-gen Publishing: Award, Audio Amplifier Category, Visual Grand Prix 2008



Beautiful form, fulfilling function

Music in all its honesty

Music the artists intend you to hear

A performance takes on new life

TD712zMK2

Ø12cm Speaker

Ultimate High Fidelity

The Perfect Evolution



We have refined the design of this ECLIPSE TD flagship speaker to achieve an even better dynamic range with improved power handling.

So now, the artistry of music, the thoughts and feelings of artists themselves, the distinctive sounds of each instrument, the exquisite harmonies woven from numerous musical notes – you can experience it all with the new TD712zMK2 like you've never experienced it before.

TD712zMK2-S Short Stand

Colour Available ● SV
Maximum Dimensions (mm) W347xH611xD431
Weight (per Speaker) 18.0kg

TD712zMK2 Regular Stand

Colour Available ● SV
Maximum Dimensions (mm) W347xH1000xD431
Weight (per Speaker) 25.0kg



TD712zMK2Bk-S Short Stand

Colour Available ● BK
Maximum Dimensions (mm) W347xH611xD431
Weight (per Speaker) 18.0kg

TD712zMK2Bk Regular Stand

Colour Available ● BK
Maximum Dimensions (mm) W347xH1000xD431
Weight (per Speaker) 25.0kg



TD510

φ10cm Speaker

A Slice of the Esoteric

A Direct Descendant from the Original 512 Model



TD510 has significantly improved high frequency characteristics and reproduces an unimaginably tight low frequency from its 10cm drivers. Thanks to some innovative design features, including adjustment to the angle of the head unit, this model can be used in a variety of locations from desktop to floor stand, or to be unobtrusively mounted on wall or ceiling. Combine five of the same speakers with one of our subwoofers to form a stunning multi-channel system for surround sound or home cinema.

TD510SV/BK/WH
Colour Available ● SV ● BK ○ WH
Maximum Dimensions (mm) W240×H362×D345
Weight (per Speaker) 9.3kg
Option
Speaker Stand D6SV/WH Wall/Ceiling Bracket CB1



TD508II

ø8cm Speaker

Distinctive Design

Our Core Features in an Easily Accommodated Design



The TD508II is the smaller sibling to the TD510 but with the same technology and design. It offers outstanding performance for stereo and surround sound from its compact, 8cm drive-unit. Thanks to its small size it can fit neatly and stylishly with any living space. It can be mounted on a dedicated stand, desk or ceiling.

TD508II su/BK/WH

Colour Available ● SV ● BK ○ WH

Maximum Dimensions (mm) W160xH242xD225

Weight (per Speaker) 2.8kg

Option

 Speaker Stand
D51II su/WH

 Wall/Ceiling Bracket
CB1



TD307II

φ6.5cm Speaker

Audiophile Miniaturisation

Small, but Perfectly Formed



This is the smallest speaker in ECLIPSE TD series, but uses the same technologies as its bigger brothers. It offers high-quality sound reproduction not previously available in this class and size of speaker. Thanks to its light weight (1.5kg) and 360-degree adjustment, it is easy to mount on cabinets or ceilings or used with the dedicated D5II stand for a floor standing option.

TD307IISV/BK/WH
Colour Available ●SV ●BK ○WH
Maximum Dimensions (mm) W130×H195×D176
Weight (per Speaker) 1.5kg
Option
Speaker Stand
D5IISV/WH



TD307PAII

φ6.5cm Speaker & Amplifier

The Ultimate, Compact, High Quality Sound System




The TD307PAII is ideal for laptops, TV's and portable devices and is child's play to setup.

The system consists of a pair of TD307II speakers, the amplifier and all the basic cables to get you started. It can be connected to a variety of music players and offers 2 inputs, one via a 3.5mm stereo mini-jack and one via RCA phono. The amplifier also includes a dedicated subwoofer output. Add the 316SW to create a 'designer' 2.1ch system.



TD307PAII **SV/BK/WH**
Colour Available ● SV ● BK ○ WH
Speaker as TD307II
Amplifier as TDA501 II
Option
Speaker Stand
DSII **SV/WH**





Power, speed and precision

Ultra fast response subwoofers bring scale to your living room

TD725sw

φ25cm×2 Subwoofer

The New Benchmark for Performance

Incorporating Revolutionary Technology



Although a subwoofer can enhance a system, it is also too often blamed for 'spoiling' the purity of the sound.

The ability to create powerful deep bass is not enough by itself. A subwoofer must have enough agility to reproduce bass with the correct timing. The TD725sw provides the answer by using twin 25cm drivers in an R2R array that delivers power and accuracy. Along with a first rate high-speed operation, the driver mechanism is decoupled from the enclosure, to deliver a cleaner uncoloured sound.



TD725sw

Colour Available ● BK

Maximum Dimensions (mm) W517×H473×D503

Weight 42,4kg



316
SW

Ø16cm Subwoofer

High-Speed Bass

Compact Size for the Home Environment



The 316SW meets the same design criteria for high-speed response as other ECLIPSE TD models. The die-cast aluminium enclosure is shaped so that no two radial surfaces are in the same plane. The 16cm drive-unit is connected to a high mass, conical anchor and is held by a sophisticated diffusion stay. The whole driver mechanism is decoupled from the cabinet and the driver fires upwards, dispersing the sound into the room by reflecting the sound off a diffuser plate.

316
SW

Colour Available ● SV

Maximum Dimensions (mm) W236×H354×D301

Weight 16.2kg



The ECLIPSE TD concept of accuracy and precision applied to amplifiers



TDA501II

Amplifier

Form and Function

To Enhance Sound Reproduction



Like all our range, this amplifier is available as an individual item. This 'enhanced' amplifier has gold plated connections to ensure the purity of signal transfer. There is no tone control or equalizing function as these would degrade the sound quality. The conical shape is the key to reducing mechanical vibrations, as no two radial surfaces are in the same plane.

All input and output options are the same as those detailed for the TD307PAII system.



TDA501II SV/BK/WH

Colour Available ● SV ● BK ○ WH

Amplifier

Maximum Dimensions (mm) W159xH154xD137

Weight 930g

AC Adapter

Maximum Dimensions (mm) W121xH33xD56

Weight 360g



TD712zMK2-S
TD712zMK2



φ12cm Speaker

• Colour Available



• Unit

φ12cm Full Range

• Frequency Response

35Hz-26kHz (-10dB)

• Efficiency/Sensitivity

84dB/W-m

• Input Resistance (Rating/Max)

35W/70W

• Impedance

6Ω

• Maximum Dimensions (mm)

W347×H611×D431 TD712zMK2-S

W347×H1000×D431 TD712zMK2

• Weight (per Speaker)

18.0kg TD712zMK2-S

25.0kg TD712zMK2

• Adjustable Head Angle

0°~12°

TD712zMK2BK-S
TD712zMK2BK



φ12cm Speaker



φ12cm Full Range

35Hz-26kHz (-10dB)

84dB/W-m

35W/70W

6Ω

W347×H611×D431 TD712zMK2BK-S

W347×H1000×D431 TD712zMK2BK

18.0kg TD712zMK2BK-S

25.0kg TD712zMK2BK

0°~12°

TD510_{SV/BK/WH}



φ10cm Speaker



φ10cm Full Range

45Hz-20kHz (-10dB)

83dB/W-m

20W/40W

6Ω

W240×H362×D345

9.3kg

Foot/Base -10°~30°

D6 Floor Stand -10°~20°

CB1 Wall/Ceiling Bracket -60°~10°

TD508II_{SV/BK/WH}



φ8cm Speaker



φ8cm Full Range

55Hz-20kHz (-10dB)

81dB/W-m

12W/24W

8Ω

W160×H242×D225

2.8kg

Foot/Base -10°~30°

D3II Floor Stand -10°~20°

CB1 Wall/Ceiling Bracket -60°~10°

TD307II_{SV/BK/WH}



φ6.5cm Speaker



φ6.5cm Full Range

100Hz-25kHz (-10dB)

80dB/W-m

12W/24W

8Ω

W130×H195×D176

1.5kg

Foot/Base -25°~90°

D5II Floor Stand -10°~20°

TD725sw



φ25cm x 2 Subwoofer

• Colour Available	<div><div></div> BK</div>
• Configuration	R2R Twin Drive-Units, sealed enclosure
• Unit	φ25cm x 2
• Frequency Response	20Hz-200Hz (-10dB) (at Bass Mode, L.P.F. 200Hz)
• Efficiency/Sensitivity	----
• Rated Output	500W (T.H.D. 1%)
• Crossover	40Hz-200Hz (variable)
• L.P.F.	40Hz-200Hz (variable, on & off)
• H.P.F.	40Hz-200Hz (variable, on & off)
• Phase Changes	0/180° (remote control)
• Play Mode	Direct/Bass (remote control)
• Harmonic Distortion	0.05% max (at 50Hz, 1/2 rated output)
• S/N	95dB minimum
• Input	Line (stereo) 1 XLR (stereo) 1 (2nd hot) Speaker Level 1
• Input Impedance	10kΩ by Line/XLR 3kΩ by Speaker Level
• Output	Line (stereo) 1 Speaker Level 1
• Power Consumption	65W (standby: 8W)
• Maximum Dimensions (mm)	W517×H473×D503
• Weight	42.4kg
• Remote Control	Yes

316sw



φ16cm Subwoofer

<div><div></div> SV</div>	----
	φ 16cm (double voice-coil)
	40Hz-200Hz (-10dB)
	80.5dB/W-m
	30W x 2 (T,H,D, 0.2%)
	40Hz-200Hz (variable)

	0/180°

	0.05% max (at 100Hz, 1/2 rated output)

	Line (stereo) 1

	Line (stereo) 1

	46W
	W236×H354×D301
	16.2kg
	No

TDA501II SV/BK/WH



Amplifier

<div><div></div> SV <div></div> BK <div></div> WH</div>	
• Frequency Response	10Hz-100kHz (+0, -3dB)
• Rated Output	12W (T,H,D, 1%)
• Harmonic Distortion	0.05% max (at 1kHz, 1W output)
• Input	Line (stereo) 1 Line (stereo mini) 1
• Input Impedance	10kΩ
• Input Sensitivity	180mVrms (at 12W output)
• Load Impedance	8Ω
• Cut-off Frequency	90Hz (-3dB)
• Output	Line (stereo mini) 1
• Power Consumption	18W
• Maximum Dimensions (mm)	Amplifier W159 x H154 x D137 AC Adapter W121 x H33 x D56
• Weight	Amplifier 930g AC Adapter 360g

TD307PAII SV/BK/WH



φ6.5cm Speaker & Amplifier

- Colour Available SV BK WH
- Speaker as TD307II
- Amplifier as TDA501II
- Accessories
 - speaker cable(3.0m) x 2
 - stereo mini <- -> stereo mini(1.6m) x 1
 - stereo mini <- -> RCA phono(1.6m) x 1
 - security wire for fall prevention x 2

D6SV/WH



D6 Speaker Stand for TD510

- Colour Available SV WH
- Material Steel/Aluminium
- Maximum Dimensions(mm) W340 x H710 x D355
- Weight(per stand) 12.6kg

D3II SV/WH



D3II Speaker Stand for TD508II

- Colour Available SV WH
- Material Steel/Aluminium
- Maximum Dimensions(mm) W316 x H740 x D331
- Weight(per stand) 8.2kg

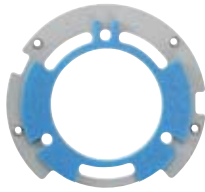
D5II SV/WH



D5II Speaker Stand for TD307II

- Colour Available SV WH
- Material Steel/Aluminium
- Maximum Dimensions(mm) W206 x H785 x D216
- Weight(per stand) 2.8kg

CB1



Wall/Ceiling Bracket for TD510/TD508II

- Material Hard Polystyrene/Steel
- Dimensions
 - Spacer φ110 x thickness 5
 - Bracket φ131 x thickness 1.6
- Weight(per bracket) 120g(per bracket)